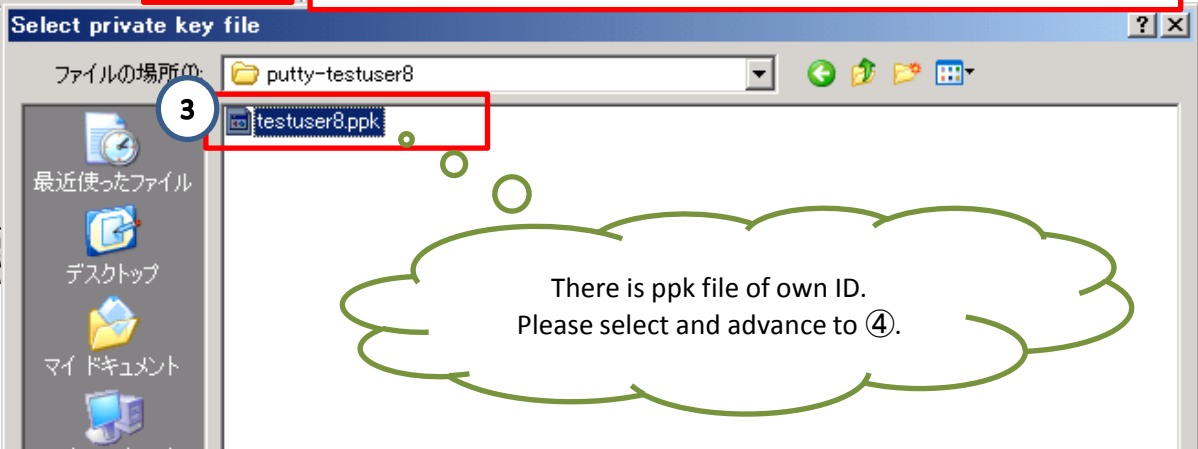


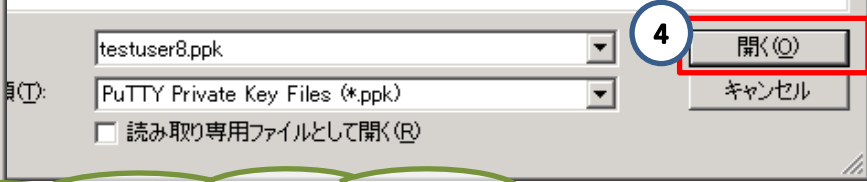
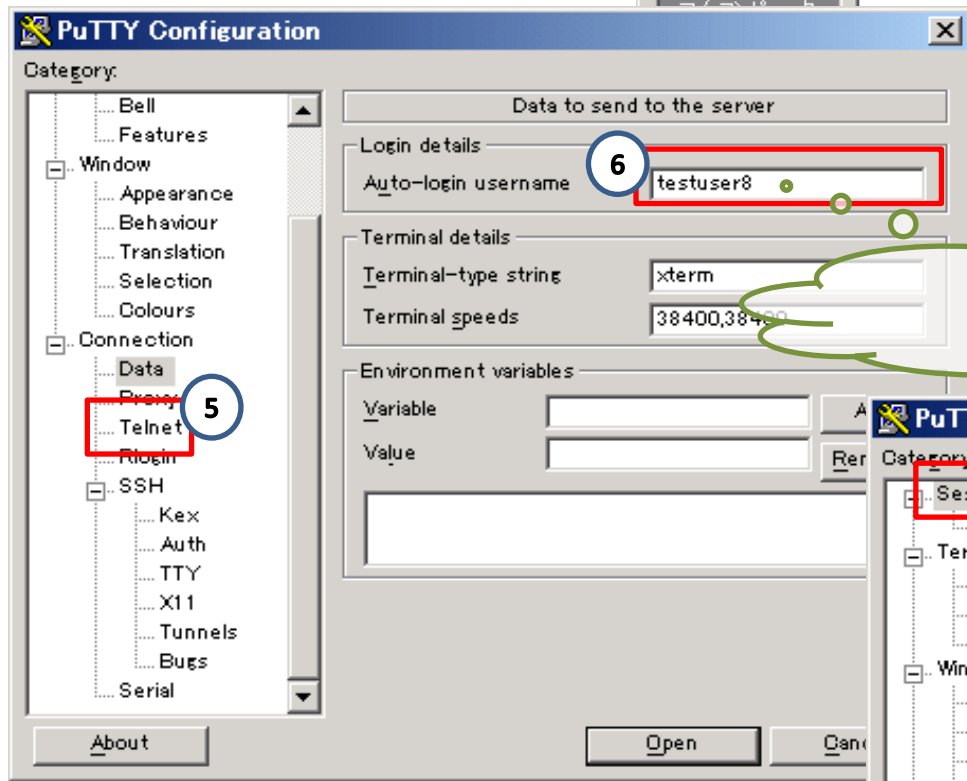
It is a procedure for [WindowsXP,VISTA,7].

Please set it from ① to ⑫ sequentially.
The connection setup of the ssh connection since the second times is omissible if it sets it once.

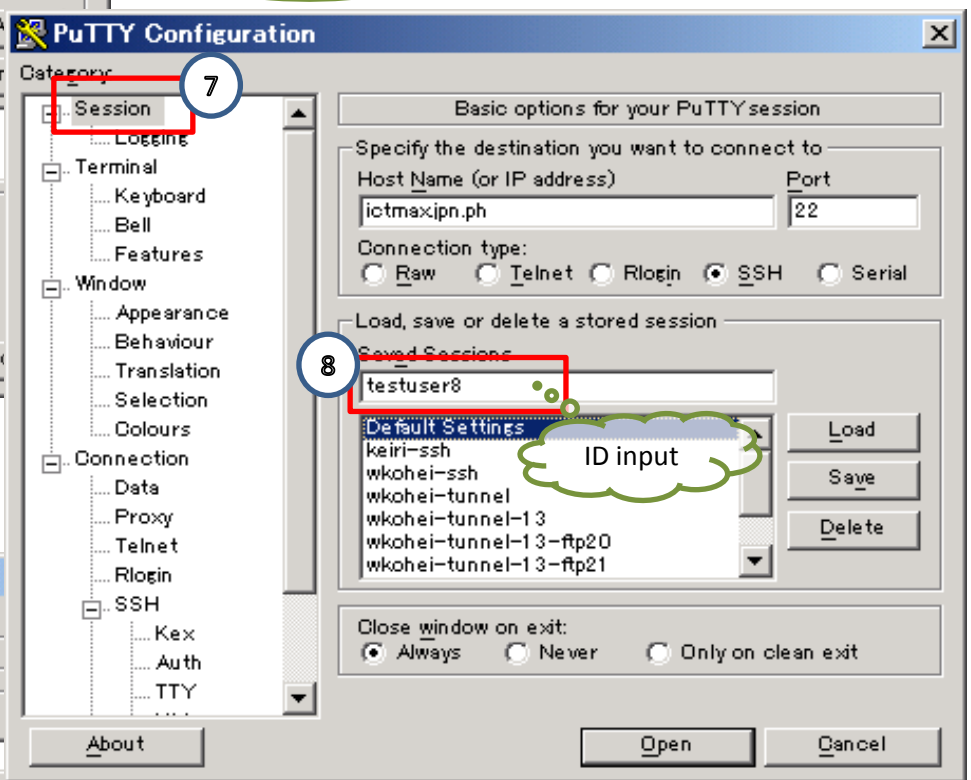
①~⑪: Ssh connection procedure
⑫: Remote desktop start



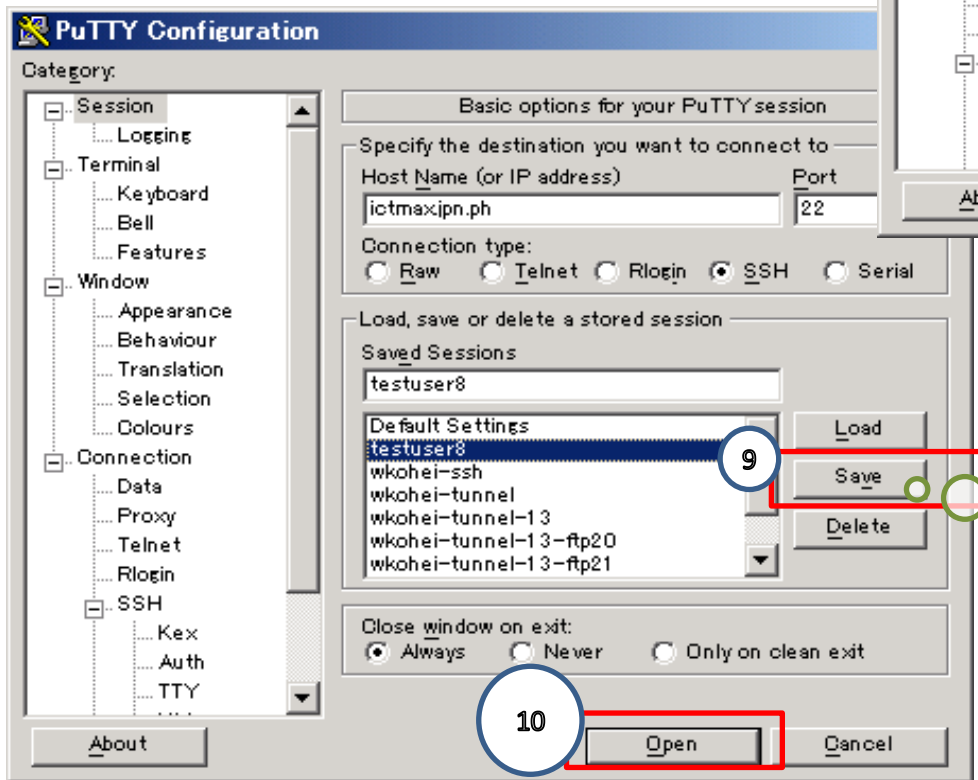
There is ppk file of own ID.
Please select and advance to ④.



Please input own ID here.

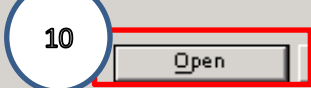


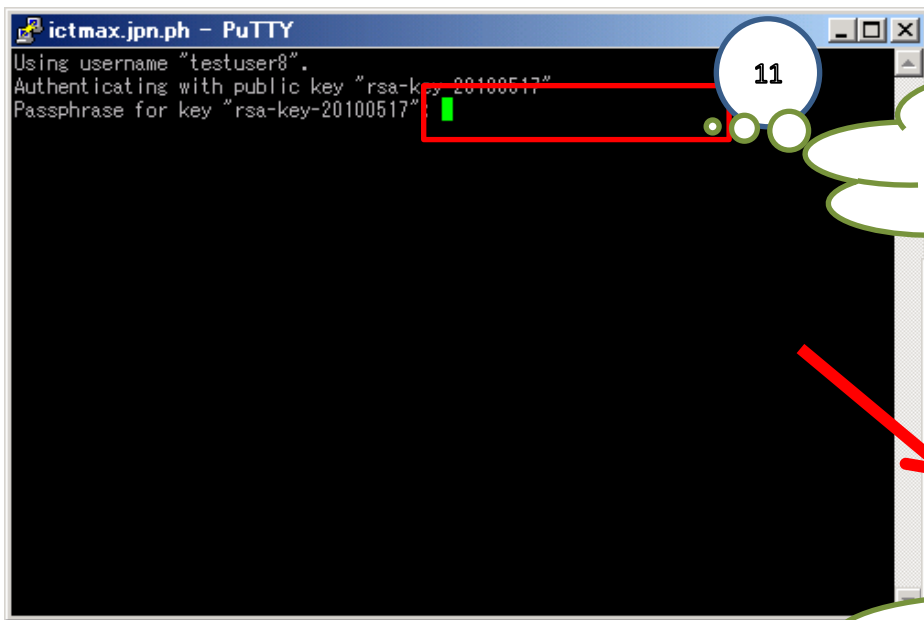
ID input



Preservation is clicked.
Next to ⑩

If the setting made now is double-clicked, it can connect since the second times.





Please input own Pass.
The connection to the server is completed if changing to the following screen.



【When you end the VPN(ssh) connection】
When upper right "X" is pressed, the ssh connection



12-1
Please start up remote desktop as shown in a left chart.
Though the place might be different depending on the kind of OS,
There must be remote desktop.

12-2
The following screen stands up.
Please input to the computer name, "localhost", and connect it.

